



SYSTEMS B2B

SYSTEMS B2B is a Systems supplier Company bringing together Architects, Consultants, Designers, Project Managers and integration specialists from vision's formation to project delivery.

At **SYSTEMS B2B**, we market energy-efficient buildings and construction solutions worldwide. Be it a new construction or a renovation, our professional team collaborates effectively under an entirely new approach to objectively determine the level of sophistication and integration of your requirements and make recommendations on which systems are best suited for your business, resulting in a high-performance building.

We are created to support your sustainable development projects. Our Design Team will act as an independent product consultant to the selection and implementation of technical systems in your project. 'Go Green' and smart solutions are gaining popularity and our commitment to innovation continues. The development of our Products and Services allows us to be at the forefront of innovation in sustainable construction.





- Fluid & Organic Steel Structures
- Advanced Building Systems
- Consultancy & Management
- Bespoke Systems Design
- Turnkey Projects



SYSTEMS B2B

HEXANOM
ALUMINIUM SYSTEMS
MINIMAL SYSTEMS
ART FACADE
CURVED GLASS
MASHRABIYA SHADING
CERAMIC FACADE
WOOD SYSTEMS
GLASS CLOSURES
CNC prototype or precision parts
3D PRINTING

BIM
DESIGN
WIND TUNNEL Test & CFD Analysis



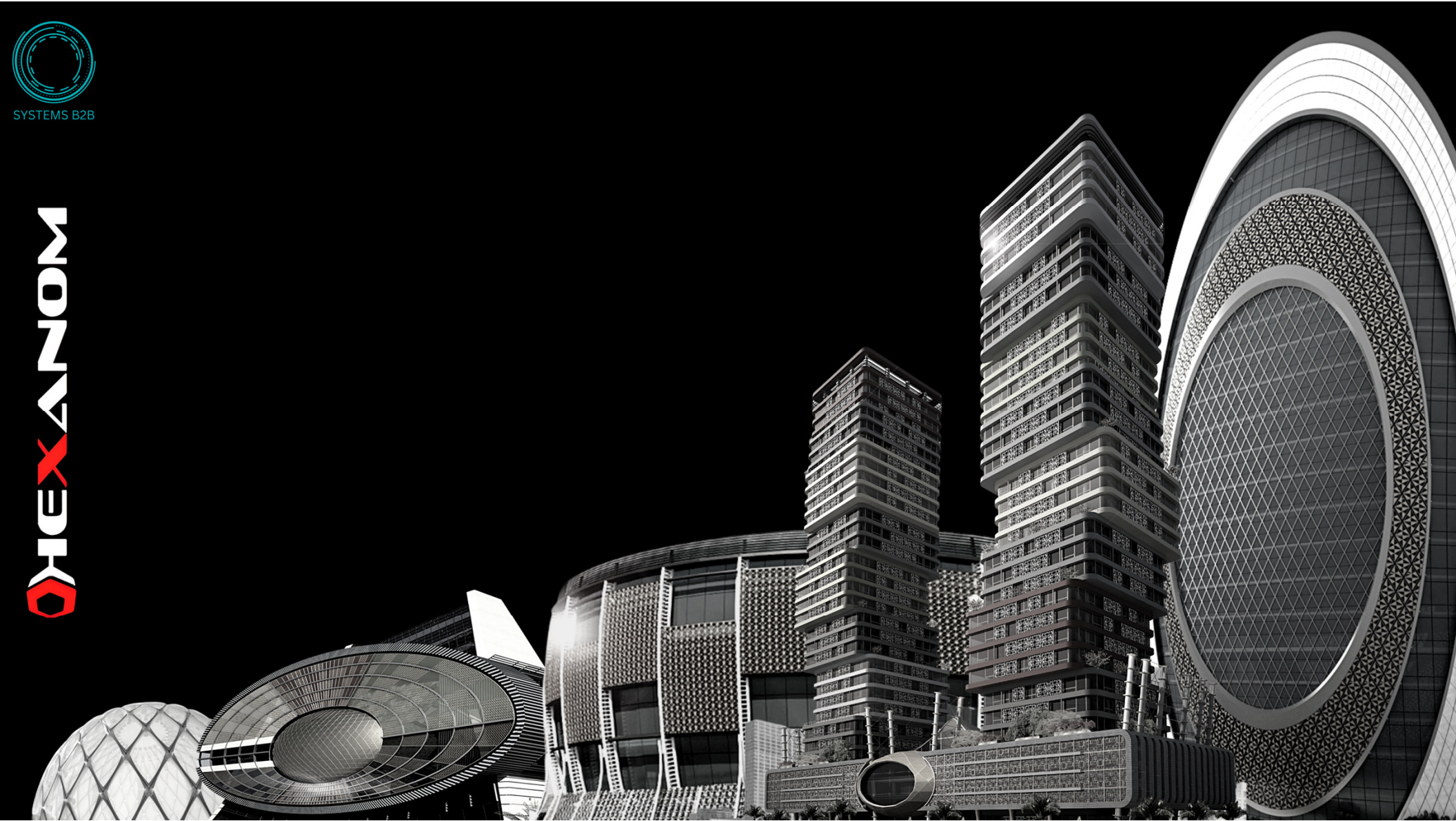
SYSTEMS B2B



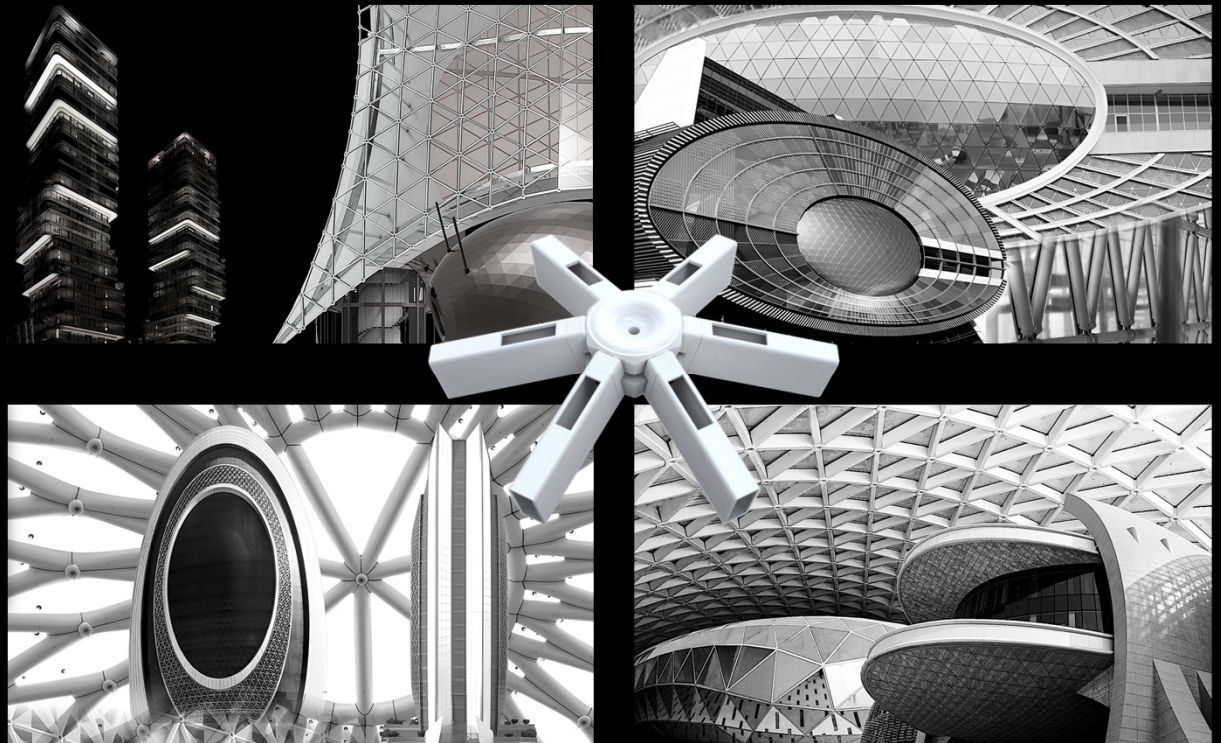
SYSTEMS B2B
SYSTEMS



HEXANOM



HEXANOM system is designed for free form, fluid and organic structures. With freeform giving a way to structural designs that was previously impossible, HEXANOM can design and build any free form structure where imagination is the only limitation. Ten years of experience, more than 71,000 sq. m. of actual projects composed of single-layer structures, glazing and cladding with various high-tech materials, like ETFE, make HEXANOM system exceeding in delivering any project with a story on it's own.



STRUCTURES
71,000 sq.m.

Lusail Marina Twin Towers

HEXANOM STRUCTURE : 2,726 sq.m.

Oval Business Center | Structural Glass Façade |
Glass Tent | Canopies | Glass Tunnel

Eye Of Qatar

HEXANOM STRUCTURE : 5,282 sq.m.

Elliptic Façade | Oval Glass Sphere | Curved Canopy

Shell Tower

HEXANOM STRUCTURE : 37,669 sq.m.

Envelope | Dome

Al Mansour Gate

HEXANOM STRUCTURE : 25,322 sq.m.

Façade Structure | Roof Ceiling Structure | Cocoons





SYSTEMS B2B

ALUMINIUM SYSTEMS





CURTAIN WALLS | UNITIZED & STICK

WINDOWS & DOORS
THERMAL BREAK

RETRACTABLE SKYLIGHTS |
DOORS | WINDOWS

MINIMAL SYSTEMS

FOLDING & PARKING SYSTEMS

PERGOLAS

OFFICE PARTITIONS

GLASS BALUSTRADES

SHADING SYSTEMS

EXTRA HIGH DOORS



SYSTEMS B2B



SYSTEMS B2B

ALUMINIUM SYSTEMS



CURTAIN WALLS | Unitized & Stick



SYSTEMS B2B

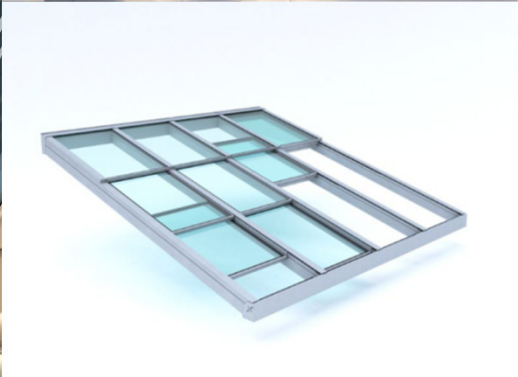
ALUMINIUM SYSTEMS



OPENING & SLIDING THERMAL BRAKE SYSTEMS



SYSTEMS B2B



RETRACTABLE SKYLIGHTS | Horizontal & Inclined

ALUMINIUM SYSTEMS



RETRACTABLE DOORS | Vertical Opening Automatic Solutions

ALUMINIUM SYSTEMS



SYSTEMS B2B



RETRACTABLE WINDOWS | Automatic & Manual

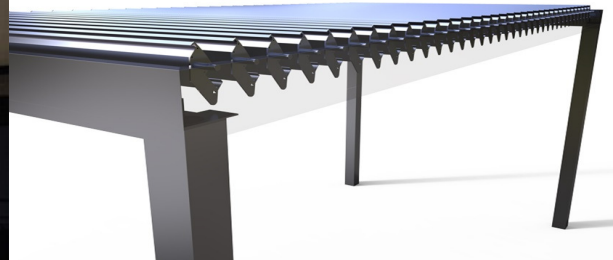






SYSTEMS B2B

ALUMINIUM SYSTEMS



PERGOLAS | Motorized or Fixed



SYSTEMS B2B

ALUMINIUM SYSTEMS



PARTITIONS | Glass, Wood



SYSTEMS B2B

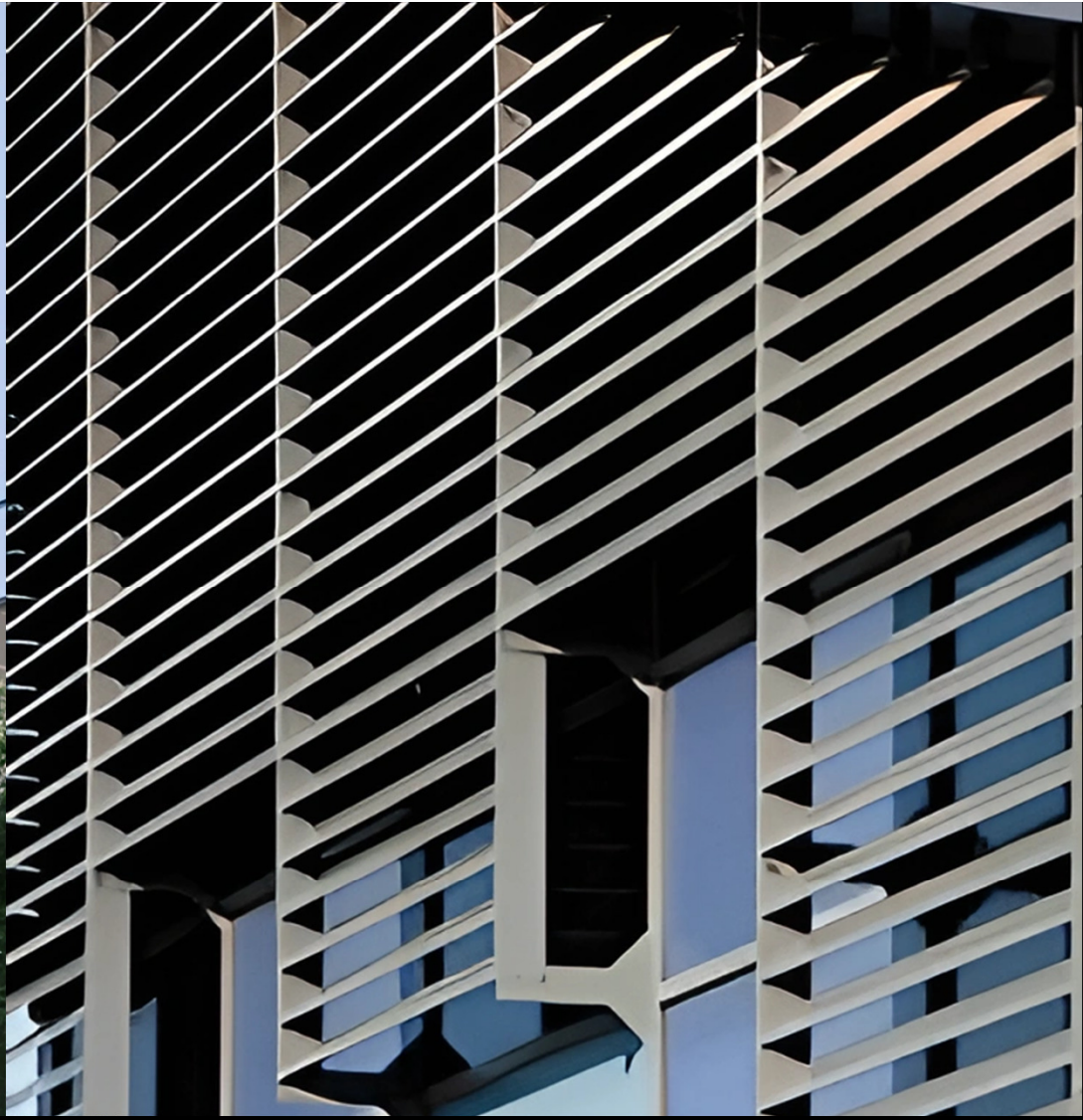
ALUMINIUM SYSTEMS



GLASS BALUSTRADES



ALUMINIUM SYSTEMS



SHADING SYSTEMS



SYSTEMS B2B

ALUMINIUM SYSTEMS



EXTRA HIGH DOORS



MINIMAL



ALUMINIUM | WOOD 20mm

ART FAÇADE



ALUMINIUM / WOOD, COPPER, BRONZE



CURVED GLASS



MULTICURVED | Curve the Impossible



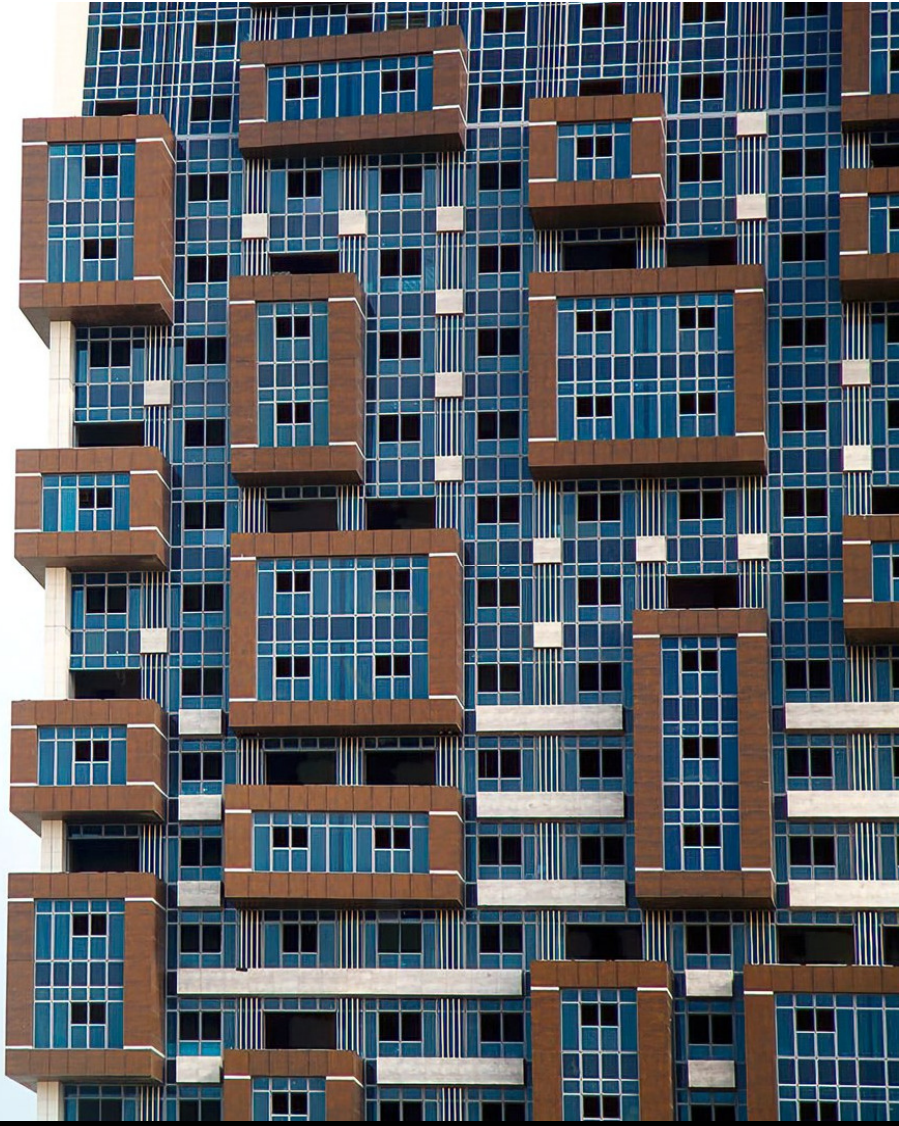
MASHRABIYA SHADING



SCREENS | CNC High-end technology



CERAMIC FAÇADE



VENTILATED | Sustainable



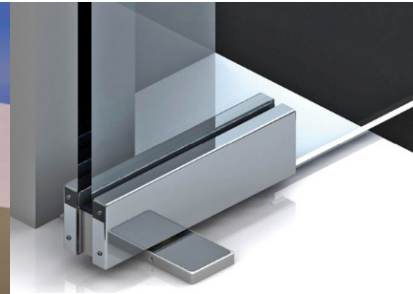
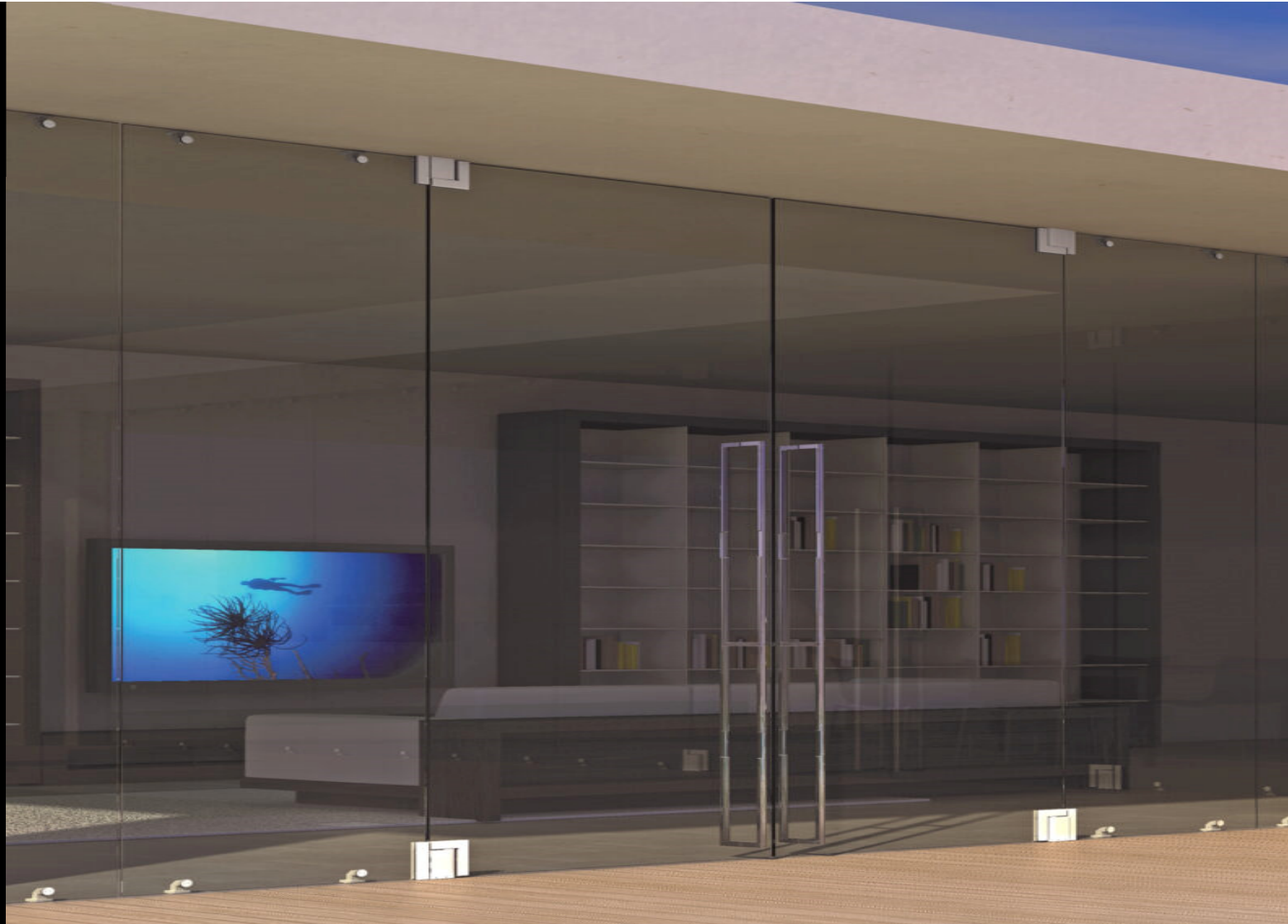
WOOD SYSTEMS



FLOORING & WALLS | Planks Cured Wood



GLASS CLOSURES



GLASS DOORS LOCKS & HANDLES

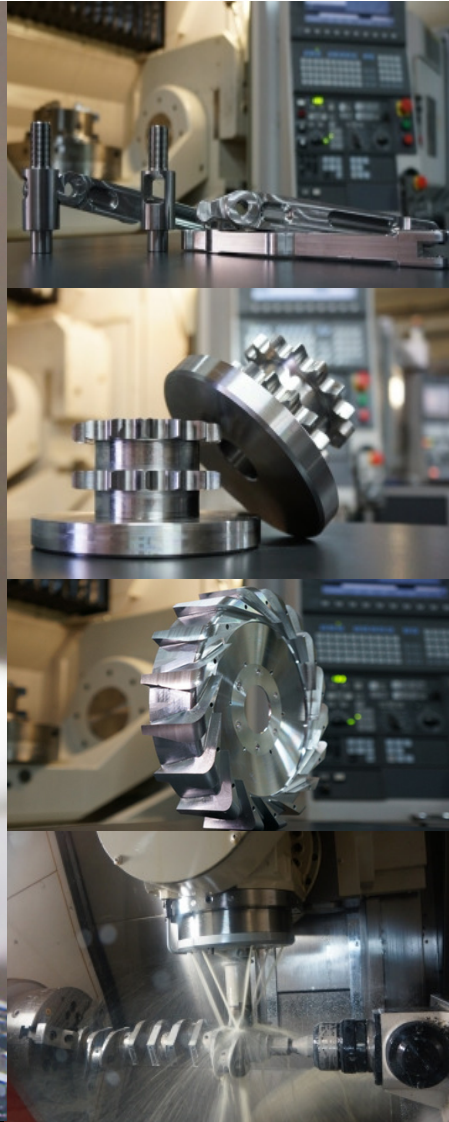
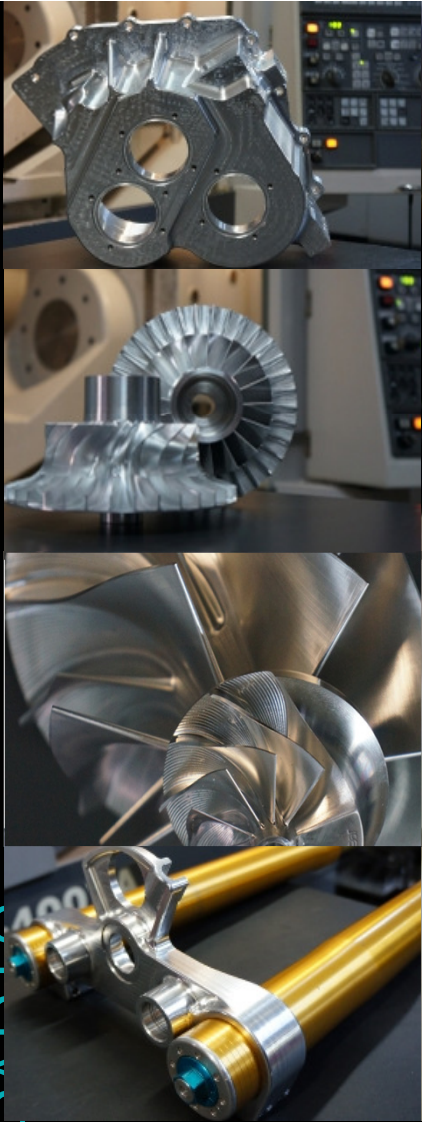


SYSTEMS B2B
exclusive

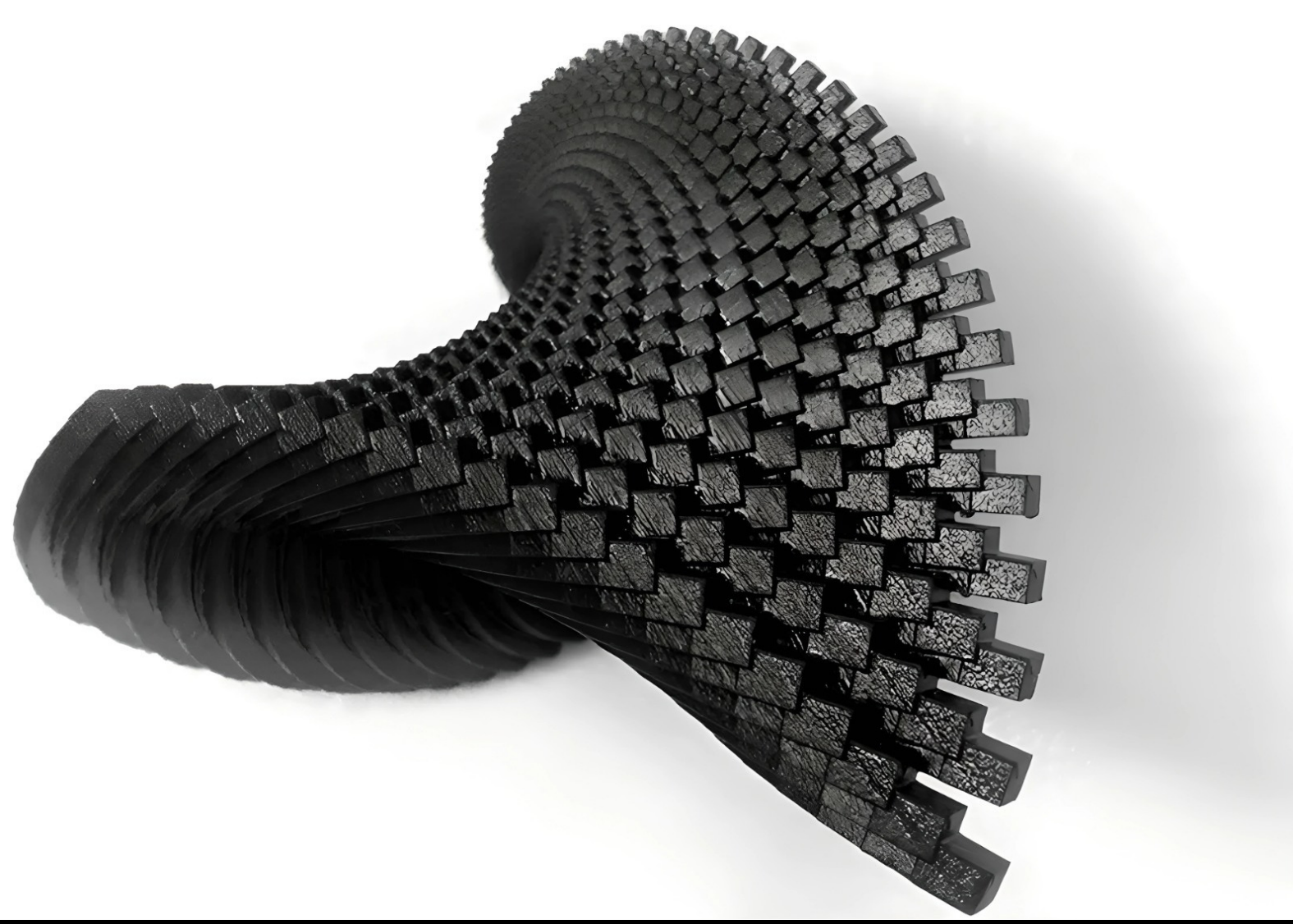


SYSTEMS B2B

CNC PROTOTYPE OR
PARTS



CNC MANUFACTURING | Precision parts



3D SPECIAL ITEMS | Steel, Ceramic, Plastic



SYSTEMS B2B
SERVICES



Whether we are working on a new cultural icon for a city or a high-end residential skyscraper, we always use an integrated design approach, working with other professionals on the project team, to create a cost-effective solution that ensures the desired image: constructability, durability, comfort, safety, energy efficiency, as well as future maintenance, repair, and renovation work.

BESPOKE SYSTEMS DESIGN

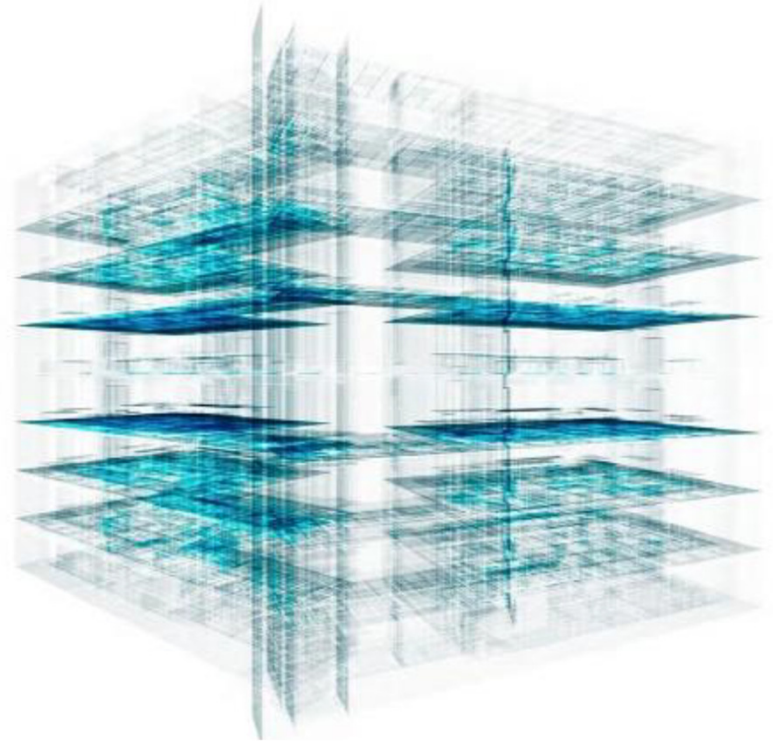


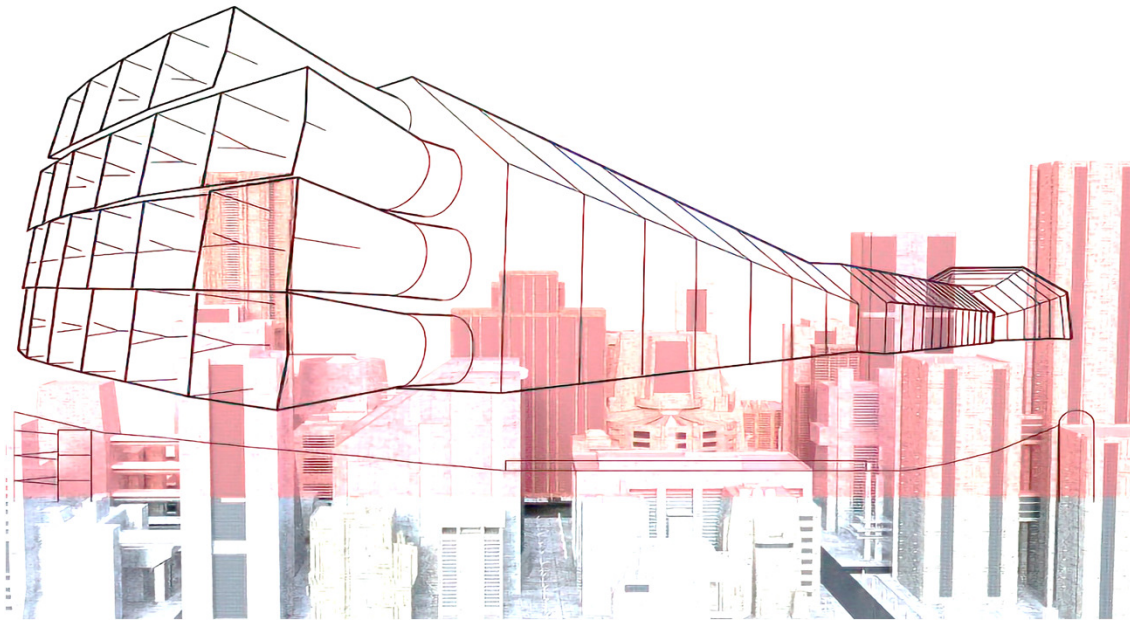
SYSTEMS B2B

Building Information Modeling or BIM is a digital representation of the physical and functional characteristics of a structure. As such, it serves as an exact source of knowledge for information about a structure, forming a reliable basis for decisions during its life cycle defined as existing from the beginning. The construction industry's future is digital, and BIM is the future of long-term facility design and management.

SYSTEMS B2B has been at the forefront in providing complete building information modelling service solutions for architecture, structure, and MEP. Our team of experts includes BIM coordinators, architects, structural engineers, HVAC engineers, plumbing engineers, electrical engineers, and BIM modelers. We provide professional, personalized, and quality services.

The heart of our success lies in the inspiring efforts of our multi-disciplinary team, coming together to deliver simply amazing work.





Wind tunnel test and CFD analysis are aerodynamic tools used for research and study of the effects of air moving along with solid objects. The wind tunnel consists of an open tubular passage with the tested construction model centrally mounted on its topography. Curved or angular buildings become contemporary, thus tests associated with these buildings' locations are important to predict the wind response.

SYSTEMS B2B can provide wind studies for these multifaceted exteriors.

WIND TUNNEL Test & CFD Analysis



SYSTEMS B2B



SYSTEMS B2B

PROJECTS



MARINA LUSAIL TWIN TOWERS

Lusail, Qatar



- Location: Marina District – Lusail – Qatar
- Use: Commercial
- **B2B SYSTEMS:** HEXANOM System 2,726 sq.m.
 - Curtain Wall – Mashrabiya Shading – Structural Glazing Façade – Thermal Brake Opening Doors & Windows – Ceramic Cladding Arch-Ion Facade





AL MANSOUR GATE

Lusail, Qatar



- Location: Energy City – Lusail – Qatar
- Use: Mixed use
- **B2B SYSTEMS:** HEXANOM System 25,322 sq.m. –
Mashrabiya Wire Rope System – Ceramic Cladding
Façade – Casted Mashrabiya



SHELL TOWER

Lusail, Qatar



- Location: Lusail – Qatar
- Use: Mixed use
- **B2B SYSTEMS:** HEXANOM System 37,669 sq.m. – Unitized Curtain Wall – Unitized Ceramic Cladding Façade – Mashrabiya Shading – ETFE Structure – Thermal Brake Opening Doors & Windows



CUBES TOWER

Lusail, Qatar



- Location: Water Front – Lusail – Qatar
- Use: Residential
- **B2B SYSTEMS:** Unitized Curtain Wall – Unitized Ceramic Cladding Façade – Thermal Brake Opening Doors & Windows – Shading Louver System



EYE OF QATAR

Doha, Qatar



- Location: Airport Road – Doha – Qatar
- Use: Commercial
- **B2B SYSTEMS:** HEXANOM System 5,282 sq.m. – Wire Rope system – Mashrabiya Shading panels – Structural Glazing – Thermal Brake Opening Doors & Windows





SALATA BUILDING

Doha, Qatar



- Location: Old Salata – Doha – Qatar
- Use: Commercial
- **B2B SYSTEMS:** Curtain Wall – Ceramic Cladding
Facade – Thermal Brake Opening Doors & Windows



MAGNUM HOTEL SUITES

Doha, Qatar



- Location: West Bay – Doha – Qatar
- Use: Hotel
- **B2B SYSTEMS:** Curtain Wall – Thermal Brake Opening
Doors & Windows



VIP HOTEL

Doha, Qatar



- Location: Corniche Street – Doha – Qatar
- Use: Hotel
- **B2B SYSTEMS:** HEXANOM Skylights 200 sq.m. – Curtain Wall – Ceramic Cladding Façade – Thermal Brake Opening Windows – Shading System



SYSTEMS B2B



AL MANSOUR SUITES HOTEL

Doha, Qatar

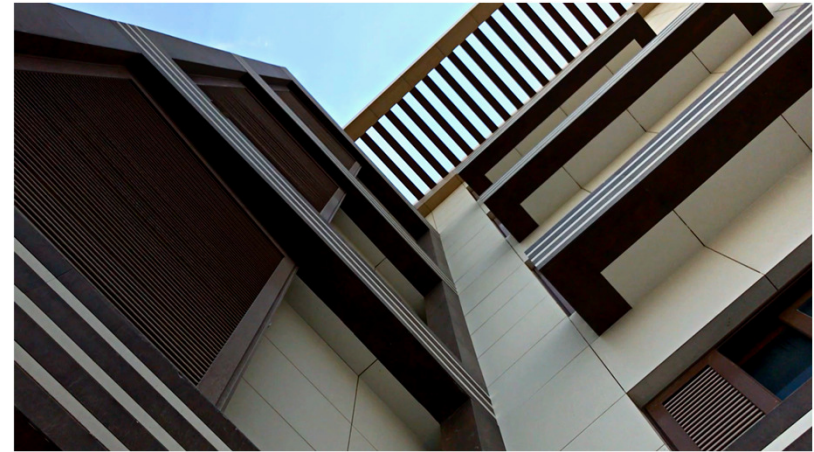


- Location: Al Mansoura – Doha – Qatar
- Use: Hotel
- **B2B SYSTEMS**: Curtain Wall – Custom Casted Mashrabiya Shading – Ceramic Cladding Façade



FOX HILLS

Lusail, Qatar



- Location: Fox Hills – Lusail – Qatar
- Use: Residential
- **B2B SYSTEMS:** Curtain Wall – Ceramic Cladding
Façade – Thermal Brake Opening Doors & Windows



AL SADD COMMERCIAL BUILDING

Doha, Qatar



- Location: Al Sadd – Doha – Qatar
- Use: Commercial
- **B2B SYSTEMS**: Curtain Wall – Custom Casted Mashrabiya Shading – Ceramic Cladding Façade



AL MANSOUR PLAZA HOTEL

Doha, Qatar



- Location: B ring Road – Doha – Qatar
- Use: Hotel
- **B2B SYSTEMS:** Curtain Wall – Unitized Ceramic 3D Cladding Façade – Thermal Brake Opening Doors & Windows



PARK LANE HOTEL APARTMENTS

Doha, Qatar



- Location: Doha – Qatar
- Use: Hotel Apartments
- **B2B SYSTEMS**: Curtain Wall – Ceramic Cladding
Façade – Thermal Brake Opening Doors &
Windows



HOTEL APARTMENTS

Doha, Qatar



- Location: Doha – Qatar
- Use: Hotel Apartments
- **B2B SYSTEMS:** Curtain Wall – Ceramic Cladding
Façade – Thermal Brake Opening Doors & Windows





AIRPORT CARGO TERMINAL

Doha, Qatar




- Location: Doha – Qatar
- Use: Cargo Terminal
- **B2B SYSTEMS**: Exterior: Curtain Wall – Automatic Doors | Interior: Structural Glazing Walls





Whatever good things we build, they end up building us.

 Qatar
Lusail Marina Twin Towers, Tower A, Floor no. 9

 Cyprus
Emmanouil Roide str. Kirzis center, Emmanuel Roide,
Kirzis Center, Block D, Office D25

 info@systems2b.com

 www.systems2b.com

 +974 6614 8372

Follow us:    Systems B2B



SYSTEMS B2B

Thank You